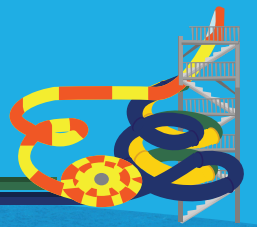


Water Parks at De Palm Island





AQUALAUNCH & AQUATUBE RULES

- 1. Our staff members have the right to refuse entry onto the water slides
- if any person(s) is deemed to be intoxicated or acting in a way that puts v
- themselves and others at riskv
- 2. Maximum operational load 1 person, 300 lbs (136.4 KG)
- 3. Person under 48 inches tall (1.22 m) are **not** permitted on this ride
- 4. Eyeglasses must be securely affixed to riders with head straps
- 5. Swim wear with exposed zippers, buckles, rivets or metal ornamentation are not permitted.
- 6. Only one rider to enter the flume at a time. Single riders only!
- 7. Never form chains
- 8. Slide must be ridden feet first lying on your back with legs firmly crossed at the ankles and arms
- folded across the chest (to prevent elbows from contacting the flume)
- 9. Riders must wait for the attendant's start signal before starting the ride
- 10. Do **not** uncross your legs or attempt to sit up until you come to a stop in the shutdown lane
- 11. Do **not** run, dive, stand, kneel, rotate or stop in the slide
- 12. At the end of the slide, obey all instructions by the attendant and exit quickly
- 13. CAUTION: For safety reasons, pregnant women and persons with heart conditions or back problems should **not** ride this ride.

SLIDE NAME	LENGTH	HEIGHT
Aqua Tube Green	113.7 m	14.0 m
Aqua Tube Blue	108.6 m	14.0 m
Body Drop	76.3 m	20.5 m



48 Inches



AQUA PLAY AREA



WATERPARK RULES

- 1. Our staff members have the right to refuse entry onto the water slides if any person(s) is deemed to be intoxicated or acting in a way that puts themselves and others at risk
- 2. An adult must supervise children under the age of 6
- 3. **NO** running on or around the water play unit
- 4. **NO** head first sliding on slides or in tunnels
- 5. **NO** climbing on pipes or handrails
- 6. **NO** hanging or swinging on pull ropes
- 7. **NO** food or alcoholic beverages are allowed in the pool and slide area
- 8. Valves and handles are accessible to allow children and adults to throttle and play with the water. We encourage you and your children to turn, pull and open these valves to have fun with the water effect you create.

